



**MODEL 985-0200**  
**MODEL 985-0300**  
**MODEL 985-0400**

## **PNEUMATIC CHIPPING HAMMER**



### **OPERATING INSTRUCTIONS & SERVICE MANUAL**

Rev: A, 5/7/2007

**TO REDUCE THE RISK OF INJURY AND EQUIPMENT DAMAGE  
USER MUST READ AND UNDERSTAND OPERATOR'S MANUAL.**

#### **Thomas C. Wilson, Inc.**

21-11 44th Avenue, Long Island City, New York 11101  
Tel: (718)729-3360 Fax: (718)361-2872 <http://www.tcwilson.com>  
E-mail: [tcwilson@tcwilson.com](mailto:tcwilson@tcwilson.com)

# SAFETY INSTRUCTIONS



## WARNING!

### **READ AND UNDERSTAND ALL INSTRUCTIONS**

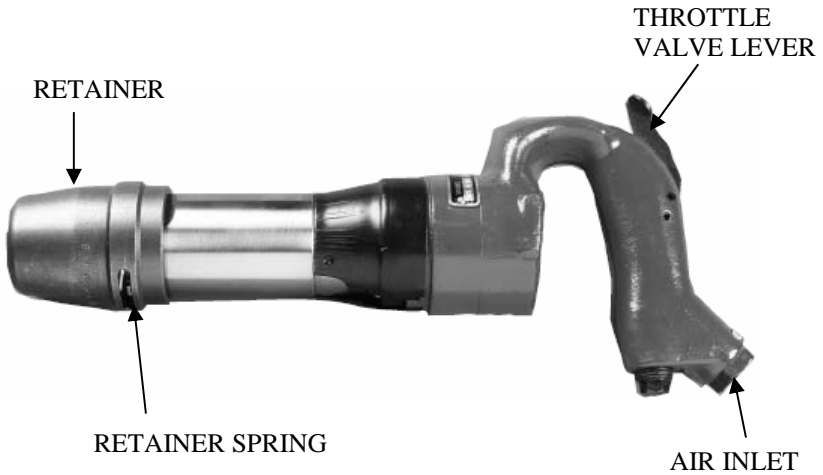
Failure to follow all instructions listed below, may result in accident, fire and/or personal injury.

### **SAVE THESE INSTRUCTIONS**

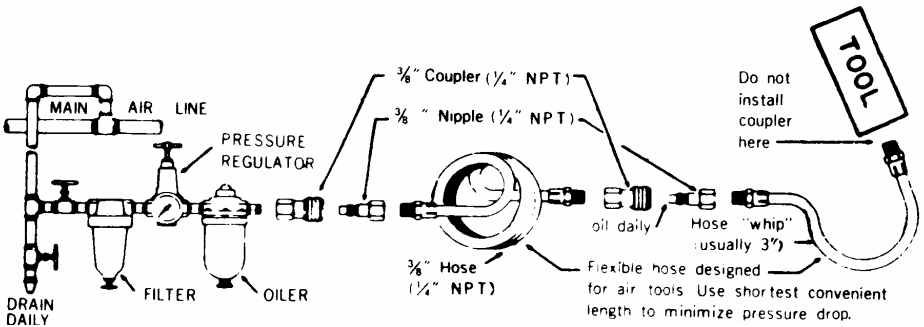
1. Do not allow corrosive gases or foreign material to enter the unit. Moisture, oil-based contaminants, or other liquids must be filtered out.
2. Eye protection is always required when running motor.
3. Hearing protection is recommended when in close proximity to all operating air motors.
4. Dust mask, non-skid safety shoes, hard hat, gloves and other personal safety equipment must be used.
5. Stay alert, watch what you are doing, and use common sense when operating a power tool.
6. Dress properly. Do not wear loose clothing or jewelry.
7. Keep your work area clean and well lit.
8. Do not operate power tools in explosive atmospheres, such as in the presence of flammable liquids, gases, or dust.
9. Disconnect the tool from the air supply before installing, making any adjustment, changing accessories, servicing or storing tool.

# OPERATION

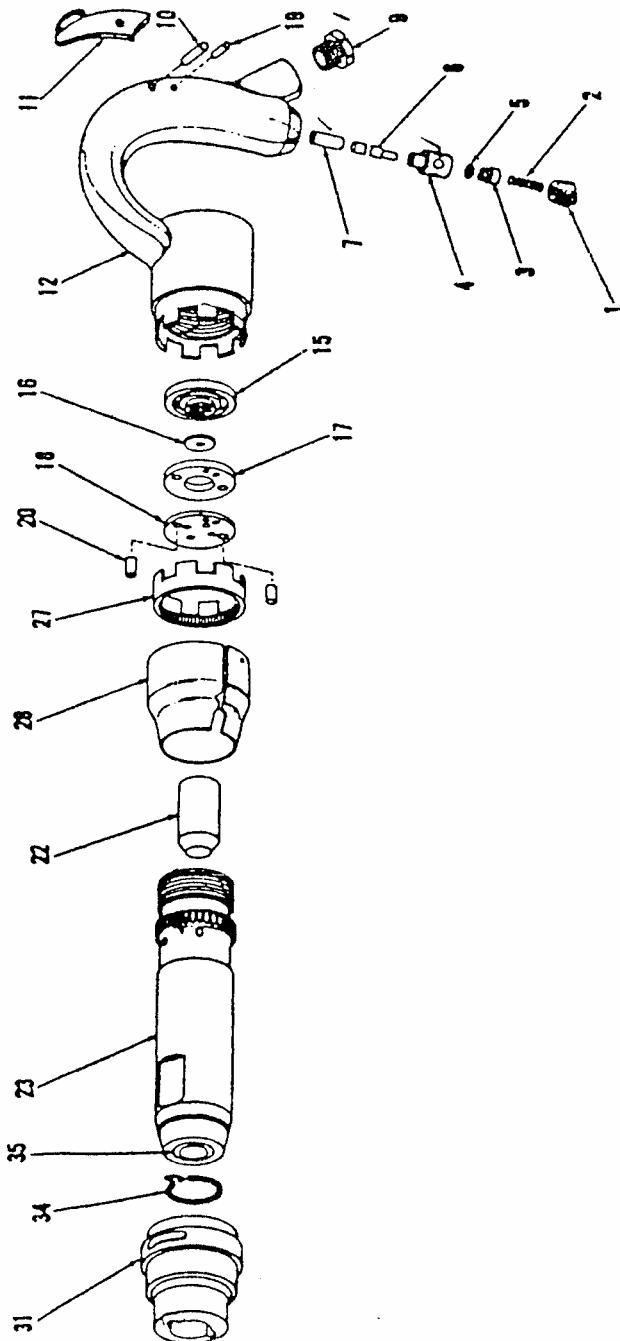
RECOMMENDED OPERATING AIR PRESSURE 90 PSI



# PROPER PIPING FOR AIR TOOLS



## PARTS LIST



Key	Description	985-0200	985-0300	985-0400
1	Plug—Throttle Valve	985-0201		
2	Spring—Throttle Valve	985-0202		
3	Throttle Valve	985-0203		
4	Bushing—Throttle Valve	985-0204		
5	‘O’ Ring	985-0205		
6	Push Pin	985-0206		
7	Bushing	985-0207		
9	Permanent Bushing	985-0209		
10	Throttle Lever Pin	985-0210		
11	Throttle Lever	985-0211		
12	Handle	985-0212		
15	Upper Lid	985-0215		
16	Valve	985-0216		
17	Valve Case	985-0217		
18	Lower Lid	985-0218		
19	Stop Pin	985-0219		
20	Dowel Pin (2)	985-0220		
22	Piston	985-0222	985-0322	985-0422
23	Cylinder	985-0223	985-0323	985-0423
27	Lock	985-0227		
28	Lock Shield	985-0228		
31	Retainer Collar	53613-0001		
34	Lock Coil Spring	53613-0002		
35	Cylinder Bushing	985-0235		
	Rubber Bumper	53613-0003		

Caution: Disassembly or reassembly of the unit must be performed by qualified personnel. It is advisable to return units to the factory or consult the factory for necessary repair.

# **MAINTENANCE AND LUBRICATION**

## **AIR SUPPLY**

Optimum air tool performance is based upon a clean, dry air supply that delivers 90 psi of air pressure at the tool, while the tool is running. (Lower air pressure will reduce the efficiency of the tool.) Airline filters will effectively eliminate moisture and particles from the air supply. To get the ultimate in performance from your air tools ample air compressor capacity, proper air hose and fittings are essential.

## **LUBRICATION**

Proper lubrication is the most important requirement in preventive maintenance. The majority of tool failure can be linked to inadequate lubrication. Tools should be oiled daily through the air inlet, or better through lubricators. Airline lubricators automatically provide oil to tools, allowing them to produce at peak efficiency. Use a light oil similar to a #10 spindle oil, or Marvel Oil for best result.

## **PERIODIC INSPECTION**

For maximum performance and protection of your air operated equipment, inspect all tools regularly to prevent unnecessary damage and prevent down time. All airline accessories should be checked on a regular basis.

# TROUBLE-SHOOTING

PROBLEM	CAUSE & SOLUTION
<b>Tool becomes sluggish</b>	Dirt or oil gum accumulation on internal parts —Flush with kerosene, operate for 30 seconds and re-lubricate.
<b>Loss of Power</b>	<ol style="list-style-type: none"><li data-bbox="370 410 643 467">1. Worn valve —Replace the valve.</li><li data-bbox="370 472 788 529">2. Worn piston, Nozzle, or accessory —Replace worn parts.</li></ol>

# SPECIFICATIONS

<b>Model no.</b>	<b>985-0200</b>	<b>985-0300</b>	<b>985-0400</b>
<b>STROKE (INCH)</b>	2	3	4
<b>Overall Length (INCH)</b>	15-1/2	16-1/4	18-1/4
<b>Weight (LBS)</b>	14.5	15.5	16.75
<b>BLOWS PER MINUTE (RPM)</b>	2150		
<b>BORE (INCH)</b>	1-1/8		
<b>Air Pressure (PSI)</b>	90		
<b>Air Inlet</b>	3/8" NPT		
<b>Hose</b>	3/8" I.D.		
<b>Air Flow</b>	25 CFM		

## **Thomas C. Wilson, Inc.**

21-11 44th Avenue, Long Island City, New York 11101

Tel: (718)729-3360 Fax: (718)361-2872 <http://www.tcwilson.com>

E-mail: [tcwilson@tcwilson.com](mailto:tcwilson@tcwilson.com)