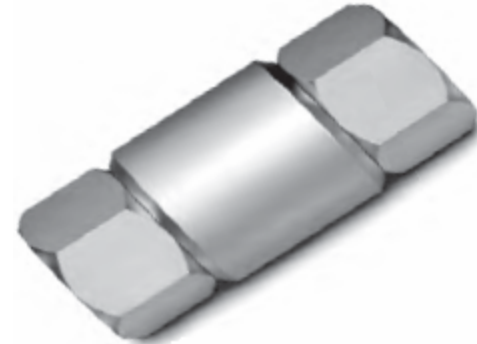


SPECIFICATIONS

Pipe Size	Standard Model	Weight	Shut-Off Flow Rate at Selected Air Pressures				
			60 psi	90 psi	110 psi	130 psi	150 psi
NPT	Part No.	Pounds	SCFM	SCFM	SCFM	SCFM	SCFM
3/8	1050-1040	1/4	38	45	49	52	56
1/2	1051-1030		55	65	71	76	82
	1051-1040	68	80	87	94	100	
3/4	1052-1020	3/8	97	115	125	135	144
	1052-1030		114	135	147	159	169
	1052-1040		152	180	196	212	226
1	1053-1020	3/4	211	250	273	294	314
1-1/4	1054-1020	5-1/4	380	450	491	529	564
1-1/2	1055-1020	7	549	650	709	764	815
2	1056-1200	13	845	1050	1120	1190	1250

**MODEL 1050 to 1056**

FLO-BREAKER EXCESS AIR FLOW CUT-OFF VALVE



OPERATING INSTRUCTIONS & SERVICE MANUAL

Rev: A, 8/29/2007

TO REDUCE THE RISK OF INJURY AND EQUIPMENT DAMAGE
USER MUST READ AND UNDERSTAND OPERATOR'S MANUAL.

Thomas C. Wilson, Inc.

21-11 44th Avenue, Long Island City, New York 11101
Tel: (718)729-3360 Fax: (718)361-2872 <http://www.tcwilson.com>
E-mail: tcwilson@tcwilson.com

Thomas C. Wilson, Inc.

21-11 44th Avenue, Long Island City, New York 11101
Tel: (718)729-3360 Fax: (718)361-2872 <http://www.tcwilson.com>
E-mail: tcwilson@tcwilson.com

SAFETY INSTRUCTIONS



WARNING!

READ AND UNDERSTAND ALL INSTRUCTIONS

Failure to follow all instructions listed below, may result in accident, fire and/or personal injury.

SAVE THESE INSTRUCTIONS

1. Do not allow corrosive gases or foreign material to enter the unit. Moisture, oil-based contaminants, or other liquids must be filtered out.
2. Eye protection is always required when running motor.
3. Hearing protection is recommended when in close proximity to all operating air motors.
4. Dust mask, non-skid safety shoes, hard hat, gloves and other personal safety equipment must be used.
5. Stay alert, watch what you are doing, and use common sense when operating a power tool.
6. Dress properly. Do not wear loose clothing or jewelry.
7. Keep your work area clean and well lit.
8. Do not operate power tools in explosive atmospheres, such as in the presence of flammable liquids, gases, or dust.
9. Disconnect the tool from the air supply before installing, making any adjustment, changing accessories, servicing or storing tool.

OPERATION

RECOMMENDED OPERATING AIR PRESSURE 90 PSI

Be certain to select a Flo-Breaker with a safe shut-off flow rating (i.e. a sufficiently low rating). This rating may be calculated from installation data or determined by a test which simulates hose rupture.

Any test should be in the actual installation and simulated hose failure should be at the farthest protected downstream location from the Flo-Breaker. The simulated hose-rupture must trip the Flo-Breaker, safely shutting off air flow. If it does not, the test should be repeated with a Flo-Breaker of lower rating.

Precaution should be taken in the above tests to protect personnel and equipment against possible hose whip in the event that the Flo-Breaker rating is too high for the installation.

PROPER PIPING FOR AIR TOOLS

