

SPECIFICATIONS

ROLLER MODEL	76196-0000
TUBE OD SIZE	1/2" - 1" (12.7mm - 38.1mm)
VOLTAGE	120 AC
FREQUENCY	60
AMPERAGE	7
FREE LOAD RPM	450
DRIVE SPINDLE	1/2" Round (5/8"-16)
WEIGHT	11.4 LBS
LENGTH (OAL)	12.3"

ACCESSORIES

3/8" QUICK CONNECTOR	41337-0000
1/2" QUICK CONNECTOR	41723-0000
ON/OFF, FORWARD/REVERSE SWITCH	76196-0105
SET OF MOTOR BRUSHES (must order 2 sets)	76196-0125

**76196-0000****ELECTRIC TUBE ROLLER****OPERATING INSTRUCTIONS
&
SERVICE MANUAL**

TO REDUCE THE RISK OF INJURY AND EQUIPMENT DAMAGE
USER MUST READ AND UNDERSTAND OPERATOR'S MANUAL.

Thomas C. Wilson, Inc.

21-11 44th Avenue, Long Island City, New York 11101
Tel: (718)729-3360 Fax: (718)361-2872 <http://www.tcwilson.com>
E-mail: tcwilson@tcwilson.com

Thomas C. Wilson, Inc.

21-11 44th Avenue, Long Island City, New York 11101
Tel: (718)729-3360 Fax: (718)361-2872 <http://www.tcwilson.com>
E-mail: tcwilson@tcwilson.com

SAFETY INSTRUCTIONS



WARNING!

READ AND UNDERSTAND ALL INSTRUCTIONS

Failure to follow all instructions listed below, may result in accident, fire and/or personal injury.

SAVE THESE INSTRUCTIONS

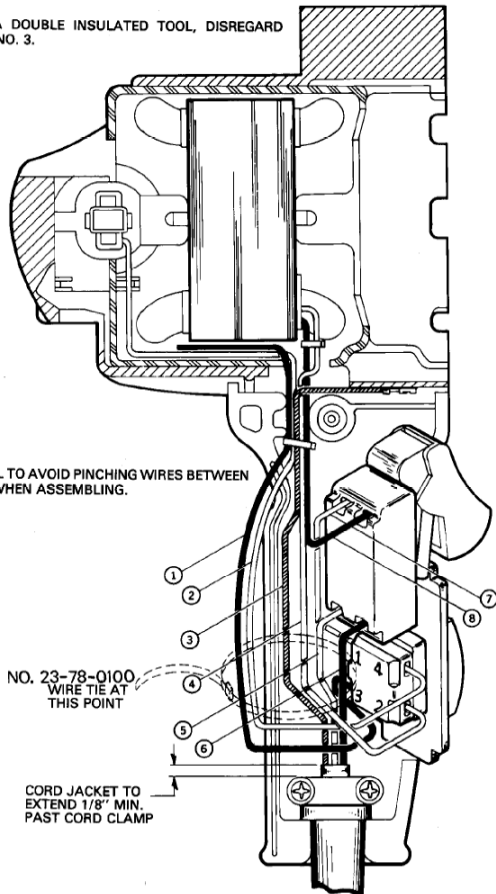
1. **KNOW YOUR POWER TOOL.** Read this service manual carefully.
2. **GROUNDING INSTRUCTIONS.** This product is equipped with a cord having an equipment-grounding conductor and a grounding plug. The plug must be plugged into an appropriate outlet that is properly installed and grounded in accordance with all local codes and ordinances.
3. **KEEP GUARDS IN PLACE** and in working order.
4. **KEEP WORK AREA CLEAN.** Cluttered areas and benches invite accidents.
5. **AVOID DANGEROUS ENVIRONMENT.** Keep work areas well lit.
6. **STORE IDLE TOOLS.** When not in use, tools should be stored in dry, high or locked-up place – out of reach of children.
7. **DON'T FORCE TOOLS.** It will do the job better and safer at the rate for which it was designed.
8. **USE RIGHT TOOLS.** Don't force small tool or attachment to do the job of a heavy-duty tool.
9. **WEAR PROPEL APPAREL.** No loose clothing or jewelry to get caught in moving parts. Rubber gloves and footwear are recommended when working outdoors.
10. **USE SAFETY GLASSES** with most tools. Also face or dust mask if cutting operation is dusty.
11. **DON'T ABUSE CORD.** Never carry tool by cord or yank it to disconnect from receptacle. Keep cord from heat, oil and sharp edges.
12. **SECURE WORK.** Use clamps or a vise to hold work. It's safer than using your hands to operate tool.
13. **DON'T OVERREACH.** Keep proper footing and balance at all times.
14. **MAINTAIN TOOL WITH CARE.** Keep tools sharp and clean for best and safest performance. Follow instructions for lubricating and changing accessories.
15. **DISCONNECT TOOLS:** When not in use; before servicing; when changing accessories such as blades, bits, cutters, etc.
16. **REMOVE ADJUSTING KEYS AND WRENCHES.** Form habit of checking that keys and adjusting wrenches are removed from tool before turning it on.
17. **AVOID ACCIDENTAL STARTING.** Don't carry plugged-in tool with finger or switch.
18. Remove the plug from the socket before carrying out any adjustment, servicing or maintenance.
19. Do not use unit with combustible fluids or where combustible fluids or fumes may be present.

WIRING SCHEMATIC - 76196-0000 MODEL

TECHNICAL DATA

FOR A DOUBLE INSULATED TOOL, DISREGARD WIRE NO. 3.

Sept. '86



NOTE:
THIS WIRING PRODUCES A COUNTERCLOCKWISE ROTATION OF THE ARMATURE, VIEWED FROM COMMUTATOR END, WITH A FIELD OF +N, AND AN ARMATURE OF -N. SWITCH IS IN FORWARD POSITION.

NOTE:
AFTER INSERTION IN SWITCH APPLY SLIGHT (2-5 LB. FORCE) TO BE CERTAIN WIRES ARE SECURED

ALL STRIP LEADS $\pm 1/16$ " UNLESS OTHERWISE SPECIFIED

WIRES ROUTED THROUGH NOTCHES IN HANDLES

AS AN AID IN REASSEMBLY, TAKE NOTICE OF WIRE ROUTING AND POSITION IN WIRE GUIDES AND TRAPS WHILE DISMANTLING TOOL.

NOTE:
All leads must be held to $\pm 1/8$ ".
All field leads to be measured from and perpendicular to laminations.
All lead lengths are before stripping.

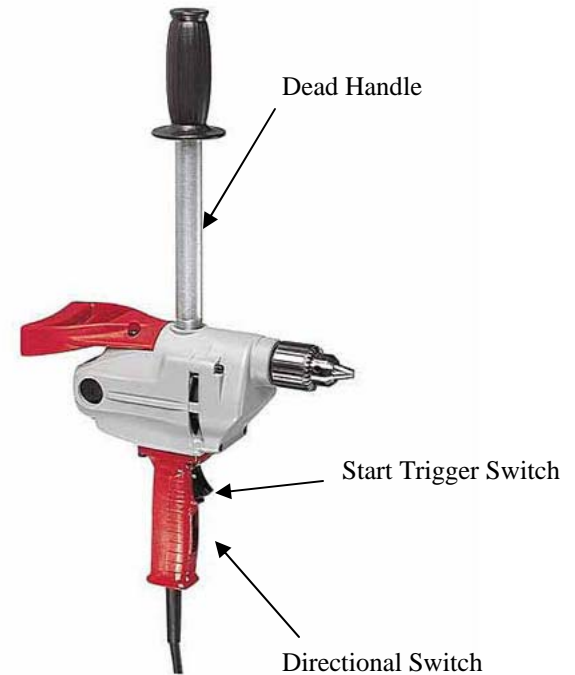
WIRING SPECIFICATIONS				
Wire No.	Wire Color	Origin or Gauge	Length	Terminals, Connectors and 1 or 2 End Wire Preparation
1	WHITE	23-94-5700	10" $\pm 1/8$ "	1/8" STRIP FOR T2, 3/16" MIN. STRIP AND TIN
2	RED	23-94-4405	10" $\pm 1/8$ "	1/8" STRIP FOR T2, 3/16" MIN. STRIP AND TIN
3	GREEN	CORD	6 1/4" $\pm 1/8$ "	3/16" STRIP FOR T1
4	BLACK	FIELD	6 1/2" $\pm 1/8$ "	3/16" STRIP AND TIN
5	WHITE	CORD	3 1/4" $\pm 1/8$ "	3/8" STRIP AND TIN
6	BLACK	CORD	3 1/4" $\pm 1/8$ "	3/8" STRIP AND TIN
7	BLACK	JUMPER	4" $\pm 1/8$ "	STRIP 3/8" AND TIN, STRIP 3/16" MIN. AND TIN
8	YELLOW	FIELD	3" $\pm 1/8$ "	3/8" STRIP AND TIN

TERMINAL DESCRIPTION		
Code	Part No.	Qty.
T1	23-74-0851	1
T2	23-74-0755	2
CONNECTOR DESCRIPTION		
Code	Part No.	Qty.
S1	23-66-1420	1

Type of Current: ~ A.C. single phase
3- Prong plug. Approved by the applicable standards of Underwriters Laboratories, Inc.

OPERATION

Main voltage must correspond to the operating voltage marked on the rating plate. The tool can be plugged into plain or safety sockets. Switch must be in the "OFF" position when connecting. The change-over switch for right- and left-hand rotation, which is built in the handle switch, must not be operated, when the machine is running.



MAINTENANCE

Before carrying out any maintenance work always remember to pull out the plug.

Keep your tool in good repair by adopting a regular maintenance program. Before use, examine the general condition of your tool. Inspect guards, switches, tool cord set and extension cord for damage. Check for loose screws, misalignment, binding of moving parts, improper mounting, broken parts and any other condition that may affect its safe operation. If abnormal noise or vibration occurs, turn the tool off immediately and have the problem corrected before further use. Do not use a damaged tool. Tag damaged tools "Do Not Use" until repaired.

Under normal conditions, re-lubrication is not necessary until the motor brushes need to be replaced. After six months to one year, depending on use, the following should be completed:

- Lubrication
- Brush inspection and replacement
- Mechanical inspection and cleaning (gears, spindles, bearings, housing, etc)
- Electrical inspection (switch, cord, armature, etc)
- Testing to assure proper mechanical and electrical operation

CLEANING:

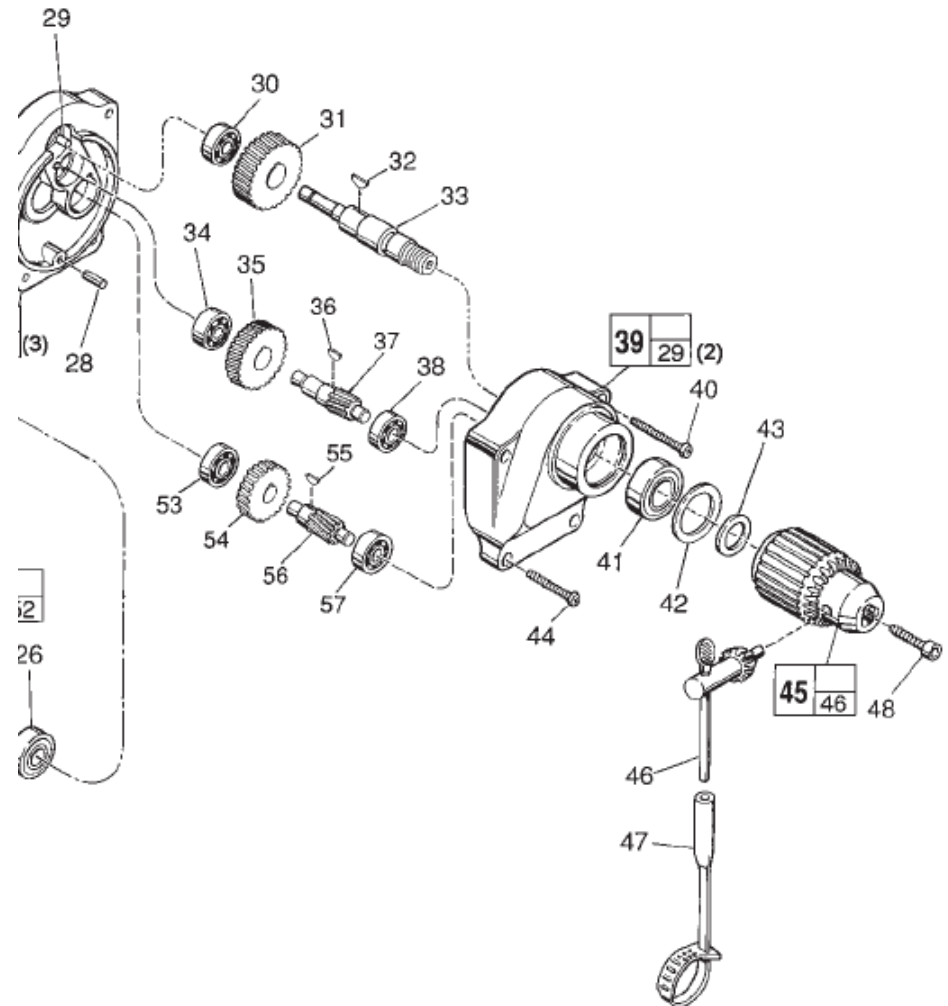
Clean dust and debris from vents. Keep the tool handles clean, dry and free of oil or grease. Use only mild soap and a damp cloth to clean your tool since certain cleaning agents and solvents are harmful to plastics and other insulated parts. Some of these include: gasoline, turpentine, lacquer thinner, paint thinner, chlorinated cleaning solvents, ammonia and household detergents containing ammonia. Never use flammable or combustible solvents around tools.

Lubrication:

#44: 3-3/4 Oz. Type "A" Grease

Notes:

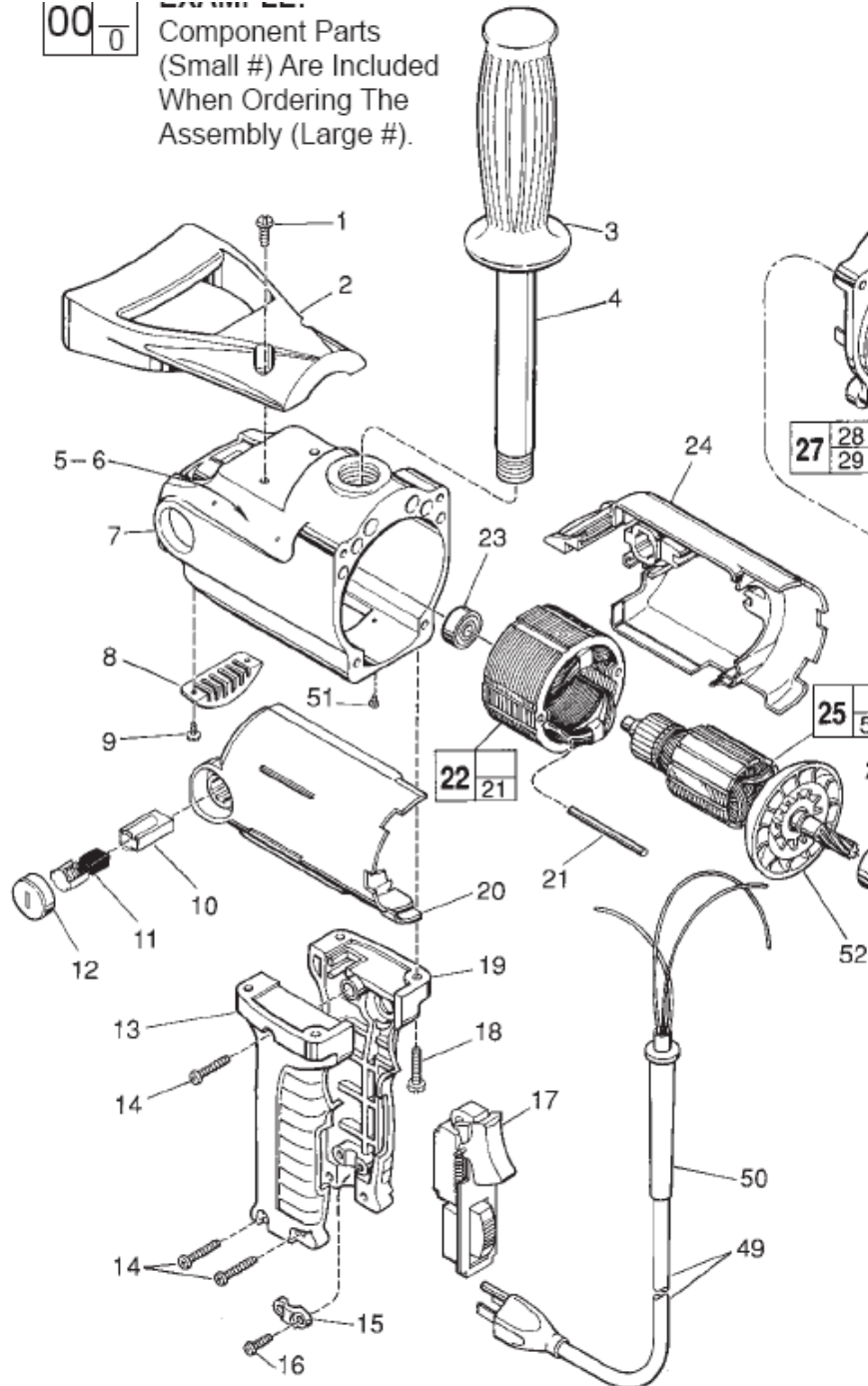
#54: Apply Red Loctite To Threads Of Side Handle



PARTS LIST - 76196-0000 MODEL

00-0

Component Parts
(Small #) Are Included
When Ordering The
Assembly (Large #).



PARTS LIST - 76196-0000 MODEL

FIG.	PART NO.	DESCRIPTION OF PART	NO. REQ.
1	06-82-8908	12-24 x 3/4" Pan Hd. Slit. Tapt. T-27	(2)
2	31-44-1550	Spade Handle	(1)
3	43-62-0246	Handle Grip	(1)
4	43-62-0122	Pipe Handle	(1)
5	12-99-3150	Nameplate Blank	(1)
6	06-85-0200	6 x 1/4" Nameplate Screw	(2)
★ 7	26-50-6300	Motor Housing	(1)
8	44-66-5510	Cover Plate	(1)
9	06-82-5270	6-32 x 1/4" Pan Hd. Slit. Tapt. T-15	(2)
10	22-20-0660	Brush Tube	(2)
11	22-18-0680	Carbon Brush Assembly	(2)
12	23-44-0210	Brush Retaining Screw	(2)
★ 13	31-44-1441	Right Hand Handle Half	(1)
14	06-82-7326	8-16 x 1" Plastite T-20 Screw	(3)
★ 15	31-17-0155	Cord Clamp	(1)
16	06-82-7270	8-16 x 5/8" Slit. Pan Hd. Plast. T-20	(2)
17	23-66-1420	On-Off Reversing Switch	(1)
★ 18	06-82-5382	1/4-20 x 3/4" Pan Hd. Slit. Tapt. T-27	(4)
★ 19	31-44-1446	Left Hand Handle Half	(1)
20	23-16-1275	Motor Insulator Right Half	(1)
21	06-65-1230	Grooved Pin	(2)
22	18-50-0062	120 V. Field	(1)
23	02-04-0847	Ball Bearing	(1)
24	23-16-1276	Motor Insulator - Left Half	(1)
★ 25	16-50-1060	120 V. Armature	(1)
26	02-04-1050	Ball Bearing	(1)
27	28-28-1700	Diaphragm Assy. (Incl. 29, Qty. 3)	(1)
28	06-65-0625	3/16 x 1/2" Groove Pin	(1)
29	45-30-0060	Bearing Retaining Slug	(5)
30	02-04-0820	Ball Bearing	(1)
31	32-75-2701	Spindle Gear	(1)
32	06-42-2000	Woodruff Key	(1)
33	38-50-5430	Spindle	(1)
34	02-04-0820	Ball Bearing	(1)
35	32-44-1161	Intermediate Gear	(1)
36	06-42-0800	Woodruff Key	(1)
37	36-66-2252	Intermediate Shaft	(1)
38	02-04-0820	Ball Bearing	(1)
39	28-14-1715	Gear Case Assy. (Incl. 29, Qty. 2)	(1)
40	06-82-7784	10-24 x 1-7/16" Tapt. T-27	(2)
41	02-04-1567	Ball Bearing	(1)
42	34-80-2500	Retaining Ring	(1)
43	45-88-0330	Chuck Washer	(1)
44	06-82-7752	10-24 x 1-3/16" Taptite Sem. T-27	(2)
45	48-66-1381	1/2" Reversing Chuck	(1)
46	48-66-3280	Chuck Key	(1)
47	48-66-4040	Key Holder	(1)
48	06-75-3150	1/4-20 x 1" Skt. Hd. Cap Screw-L.H.	(1)
49	22-64-0121	Cord Set	(1)
50	44-76-0150	Cord Protector	(1)
51	06-95-5150	6-32 x 1/4" Hex Hd. Tapt. Sems	(1)
52	22-84-0660	Fan	(1)
53	02-04-0820	Ball Bearing	(1)
54	32-42-1221	Intermediate Gear	(1)
55	06-42-0800	Woodruff Key	(1)
56	36-66-2201	Intermediate Shaft	(1)
57	02-04-0820	Ball Bearing	(1)
	10-98-5986	Warning Label	(1)