

## SPECIFICATIONS

MODEL	9700-0000	9700-5220
VOLTAGE	115	220
FREQUENCY	60	50
HORSEPOWER	2	2
AMPS.	10	5
STATIC WATER LIFT (INCHES)	110	110
AIR DISPLACEMENT (CFM)	114	114
VACUUM MODE	DRY ONLY	DRY ONLY
SHIPPING WEIGHT	67 LBS	67LBS

### GROUNDING INSTRUCTIONS

**NOTE:** The operator must make certain that the amperage available at the outlet meets or exceeds the vacuum cleaner's amperage rating as specified on the vacuum cleaner's technical data sticker. Failure to verify the power available may result in unsatisfactory operation. Make certain that a suitable plug and outlet are used.

This vacuum cleaner must be grounded. Should it malfunction or breakdown, grounding provides a path of least resistance for electric current to reduce the risk of electric shock. This vacuum cleaner is equipped with a cord having an equipment-grounding conductor and grounding plug. The plug must be plugged into an appropriate outlet that is properly installed and grounded in accordance with all local codes and ordinances.

**WARNING:** Improper connection of the equipment-grounding conductor can result in a risk of electric shock. Check with a qualified electrician or service person if you are in doubt as to whether an outlet is properly grounded. Do not modify the plug provided with the vacuum cleaner. If it will not fit the outlet, have a proper outlet installed by a qualified electrician. No adaptor should be used with this vacuum cleaner.

### Thomas C. Wilson, LLC

21-11 44th Avenue, Long Island City, New York 11101  
 Tel: (800) 230-2636 Fax: (718)361-2872 <http://www.tcwilson.com>  
 E-mail: [tcwilson@tcwilson.com](mailto:tcwilson@tcwilson.com)



TRUSTED TO PERFORM

☐ 9700-0000  
☐ 9700-5220

## POWER-SOOT VAC INDUSTRIAL VACUUM CLEANER



### OPERATING INSTRUCTIONS &

Rev: A, 6/10/2016

TO REDUCE THE RISK OF INJURY AND EQUIPMENT DAMAGE  
 USER MUST READ AND UNDERSTAND OPERATOR'S MANUAL.

### Thomas C. Wilson, LLC

21-11 44th Avenue, Long Island City, New York 11101  
 Tel: (800) 230-2636 Fax: (718)361-2872 <http://www.tcwilson.com>  
 E-mail: [tcwilson@tcwilson.com](mailto:tcwilson@tcwilson.com)

## SAFETY INSTRUCTIONS



### WARNING!

#### READ AND UNDERSTAND ALL INSTRUCTIONS

Failure to follow all instructions listed below, may result in accident, fire and/or personal injury.

#### SAVE THESE INSTRUCTIONS

1. Do not leave vacuum cleaner when plugged in. Unplug from outlet when not in use and before servicing.
2. Do not allow vacuum cleaner to be used as a toy. Close attention is necessary when used by or near children.
3. Use only as described in this manual. Use only with recommended attachments.
4. Do not use with damaged cord or plug. If vacuum cleaner is not working as it should, has been dropped, damaged, left outdoors, or dropped into water, return it to a service center.
5. Do not: pull or carry by cord, use cord as a handle, close a door on cord, or pull cord around sharp edges or corners. Do not run vacuum cleaner over cord. Keep cord away from heated surfaces.
6. Do not unplug by pulling on cord. To unplug, grasp the plug, not the cord.
7. Do not handle plug or appliance with wet hands.
8. Do not put any object into openings. Do not use with any openings blocked. Keep free of dust, lint, hair and anything that may reduce airflow. Poor ventilation will result in overheating of motor.
9. Keep hair, loose clothing, fingers and all parts of body away from openings and moving parts.
10. Do not pick-up anything that is burning or smoking such as: cigarettes, matches or hot ashes, etc.
11. Do not use without appropriate filters in place.
12. Turn off all controls before unplugging.
13. Use extra care when cleaning on stairs.
14. Do not recover flammable or combustible liquids such as gasoline, or use in areas where they may be present.
15. Always turn off vacuum cleaner before connecting or disconnecting motorized power-nozzle.
16. Never operate unit unless the power-head is securely fastened to the recovery tank with latches.
17. Connect to a properly grounded outlet only. See grounding instructions.

## TROUBLE SHOOTING

Symptom	Possible Cause/Corrective Action
<b>Loss of Suction</b>	<ol style="list-style-type: none"> <li>1. Obstruction in hose or wand -Attached hose to exhaust air orifice</li> <li>2. Clogged air filter assembly -Tap never-clog bag or wash if necessary.</li> <li>3. Uneven gasket fit -Reposition or replace gasket.</li> <li>4. Dented collection can rim -Replace can</li> </ol>
<b>Motor Won't run</b>	<ol style="list-style-type: none"> <li>1. Blown fuse or tripped circuit -Replace fuse or reset circuit.</li> <li>2. Defective switch -Replace switch.</li> <li>3. Defective power cord -Replace power cord.</li> </ol>

OPERATION

INSPECTION

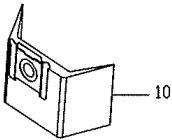
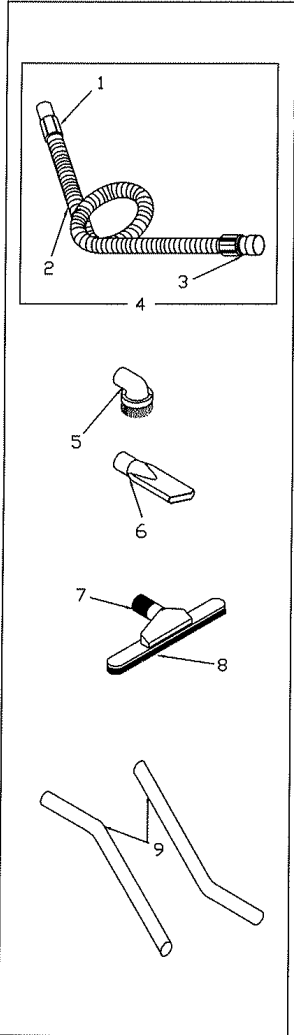
Carefully unpack and inspect your vacuum cleaner. Each vacuum cleaner is tested and thoroughly inspected before being shipped; therefore, any damage is the responsibility of the delivering carrier, who should be notified. Read all instructions carefully before operating vacuum cleaner.

IMPORTANT SAFETY PRECAUTIONS

**WARNING:** If vacuum cleaner is used to recover hazardous substances such as: asbestos, silica, pesticides, etc., the following safety precautions must be taken.

- 1. Vacuum cleaner must be equipped with an HEPA filter.
- 2. Service and operation should only be carried out by trained personnel.
- 3. Dispose of collected materials responsibly. Follow government regulations for the disposal of hazardous materials.

**NOTE:** Any health hazard associated with the use of this vacuum cleaner in conjunction with the recovery of asbestos and other hazardous substances has not been investigated by U.L. (Underwriters Laboratories).



ITEM#	PART#	DESCRIPTION	QTY
1	381199B	HOSE CUFF, Ø1.5" (Ø38mm), BLACK, FOR MODEL AS-400	1
2	381141	CRUSHPROOF HOSE ONLY, Ø1.5" (Ø38mm), /FT	10'
3	381470	RIGID HOSE CUFF (MACHINE SIDE) FOR AS-400 FOR 1.5" CRUSHPROOF HOSE	1
4	381475-10	CRUSHPROOF SUCTION HOSE ASSEMBLY 1.5" x 10' FOR MODEL AS-400	10'
5	381482	DUSTING BRUSH 3" FOR AS-400 (40mm)	1
6	381480	CREVICE TOOL 10" FOR AS-400 (40mm)	1
7	381485	FLOOR TOOL w/BRUSHES 16" FOR AS-400 (40mm)	1
8	381487	REPLACEMENT BRUSHES FOR FLOOR TOOL 16" FOR AS-400 (40mm)	1
9	381477	DOUBLE BEND WAND FOR AS-27 & AS-400 (2 PC) CHROME	1
10	212535	PAPER FILTER BAGS FOR MODEL AS-400 (PACKAGE OF 5)	1

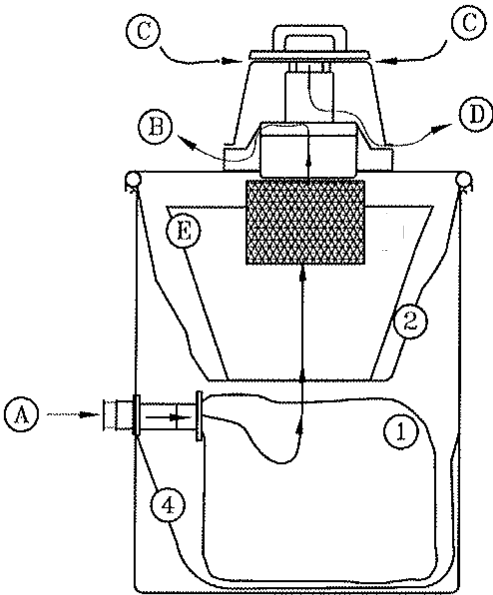
FILTRATION SYSTEM

SM-350

PARTS LIST

SM-350

PAPER AND FILTER BAG SYSTEM



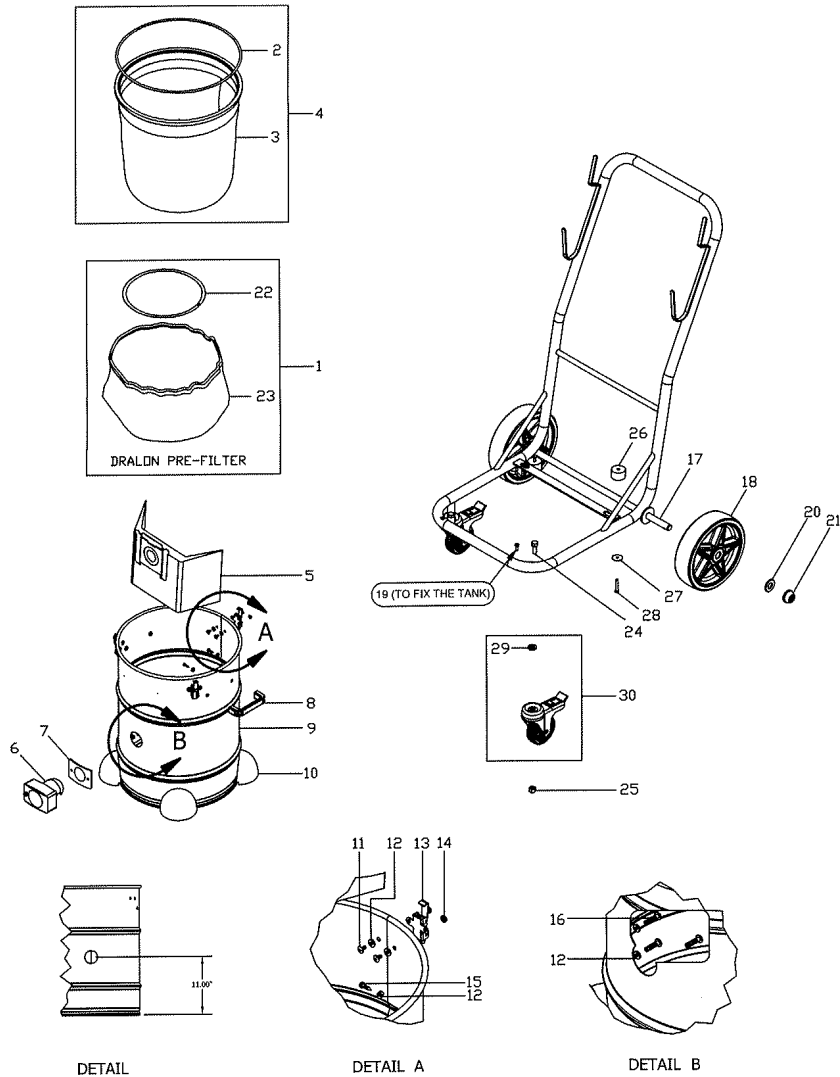
2D Models (Single motor)

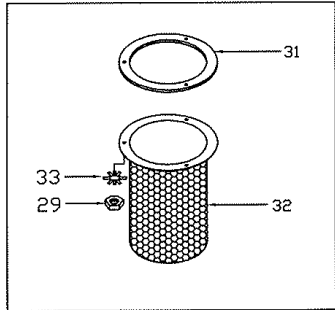
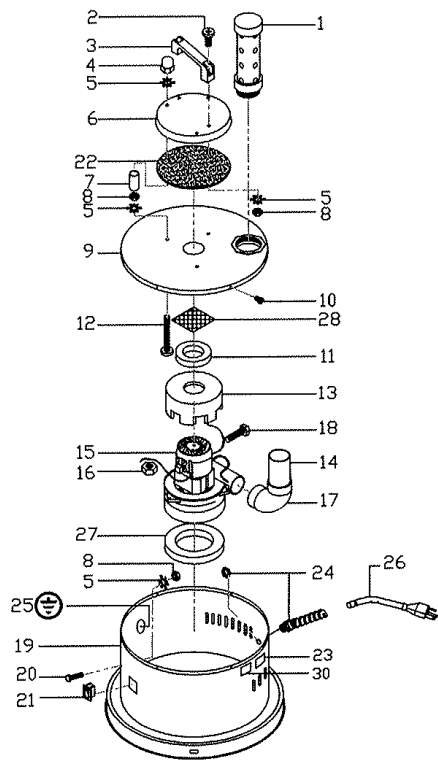
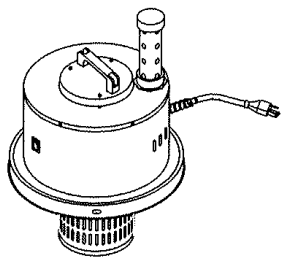
- 1. PAPER FILTER BAG ( DISPOSABLE ): Collets the bulk of recovered material and facilitates emptying)
- 2. MAIN FILTER ( WASHABLE): Made of polyester cloth
- 3. DRALON PRE\_FILTER (WASHABLE): Prevents caking of fine dust
- 4. POLY LINER "NEST" ( OPTIONAL): To facilitate the removal of paper filter bag
- A. WORKING AIR/SUCTION INLET
- B. WORKING AIR EXHAUST
- C. COLLING AIR INTAKE
- D. COOLING AIR EXHAUST
- E. WIRE CAGE FOR MAIN FILTER

ITEM#	PART#	DESCRIPTION	QTY
1	212057	DRALON PRE-FILTER ASSEMBLY FOR MODELS 2D/4D/CS-12/14/27	1
2	211950	RING FOR FILTER FOR MODEL 2D/4D/CS-14/17/27 (DIAM APPROX 15.75") GALVANIZED	1
3	212002	MAIN FILTER ONLY FOR MODELS 4D-12/14/17/27	1
4	212003	MAIN FILTER ASSEMBLY FOR MODELS CS/2D-12	1
5	212535A	PAPER FILTER BAG FOR MODEL AS-400 (BULK)	1
6	213288	SUCTION INTAKE FOR MODEL CR-1, AS-10 AND AS-400	1
7	213286	GASKET FOR SUCTION INTAKE FOR MODEL CR-1, AS-10 AND AS-400	1
8	211203T	PLASTIC HANDLE FOR RECOVERY TANK, BLACK	2
9	212978AWB	RECOVERY TANK ONLY, 17 GALLONS, AISI 430 BA, WITH WHEEL BRACKETS WELDED	1
10	214603	WHEEL COVER, GREY PLASTIC	4
11	214375	TRUSS HEAD PHILLIPS MACHINE SCREW, 10-32 THREAD, 3/8" LENGTH, 18-8 SS	6
12	211545	SEAL WASHER, #10 (BARTITE)	12
13	211515	LATCH, STAINLESS STEEL (TIGER-VAC)	3
14	213792	HEX NUT, 10-32, S/S	6
15	211763A	SHEET METAL SCREW, PAN HEAD PHILLIP, #10 x 3/4, ZINC PLATED	2
16	219534	SCREW FOR SUCTION INLET PAT TMT PHL M5 x 30	4
17	219400B	TUBE FRAME, HAMMERTONE GRAY A-9	1
18	211432	WHEEL, BLACK RUBBER, 8" WITH 5/8" BEARING	2
19	211050	BOLT, PAN PHILLIPS, M5 x 16, S/S	2
20	215956	DOWEL FOR REAR WHEEL FOR AVSD-35 & AV-35	2
21	215954	CAP FOR REAR WHEEL FOR AVSD-35 & AV-35	2
22	211272	RING FOR FILTER, 11", CRS	1
23	212056	DRALON PRE-FILTER ONLY FOR MODELS CS/2D-12/14/17/27	1
24	214090	HEX BOLT 3/8 -16 X 1", ZINC PLATED	2
25	212993A	HEX NUT 3/8", STAINLESS STEEL WITH NYLON	2
26	211949G3B	BUMPER EPDM BLACK 7/8" X 1-3/8" OD X 7/32" ID	2
27	213778	FLAT WASHER S/S 3/16" ID x 1" OD x 0.09 THICK	2
28	213038	BOLT, PAN PHILLIPS, M5 x 35, S/S	2
29	213784	FLAT WASHER 3/8" S/S	2
30	216505A	CONDUCTIVE WHEEL 2.5", GREY, WITH STAINLESS STEEL FRAME, WITH BRAKE	2

DRY RECOVERY - DRUM INTAKE

- a) Release latches and remove power-head from recovery drum.
- b) Place DRALON/POLYESTER FILTER WITH GASKET (NOS. 1 AND 2) on the recovery drum. Make sure that the filter's gasket covers the entire circumference of the recovery tank lip.
- c) DRALON SAFETY FILTERS (NO.3) and POLYESTER SAFETY FILTERS (no.4) may remain in place during recovery through drum intake.
- d) Place power-head on recovery drum and fasten latches.
- e) Make sure that the top fill intake is closed. Use the supplied cap to seal top fill suction intake.
- f) Fasten hose to suction intake on side of recovery drum and attach desired tools to hose.
- g) Operate on grounded electrical outlets only (see section F; "GROUNDING INSTRUCTIONS").
- h) Use the on/off switch on the power head to turn on the unit.





ITEM#	PART#	DESCRIPTION	QTY
1	212440	EXHAUST SILENCER ASSEMBLY 2" x 7" FOR EC SERIES	1
2	211763A	SHEET METAL SCREW, PAN HEAD PHILLIP, #10 x 3/4, ZINC PLATED	2
3	211203C	HANDLE PLASTIC FOR POWER HEAD, BLACK	1
4	211131	ACORN HEX NUT, M5 SS	3
5	211093	LOCK WASHER, M5, SS	9
6	211454B	TOP LID FOR EC-12 AND 4D-30, PAINTED	1
7	211830	METAL SPACER 1/2"OD x 3/8"ID x 1"LG, ZINC PLATED	3
8	211092	HEX NUT, M5, SS	6
9	212434B	LID FOR MOTOR HOUSING FOR EC-12, PAINTED	1
10	212900	SCREW, SELF-TAPPING, #6 x 1/4	6
11	211281A	GASKET NEOPRENE SPONGE 1/2" X 4" OD X 2-3/8" ID, MOTOR COOLING AIR FOR HAZVAC	1
12	213038	M5 X 35 PAN PHILIP HEAD S/S BOLT FOR HAZMASTER	3
13	211280	FOAM SILENCER	1
14	212439	PVC PIPE FOR MOTOR EXHAUST FOR MODEL EC-12	1
15	212488	MOTOR G BYPASS w/TANGENTIAL DISCHARGE 120V 1250 WATTS	1
16	214393	FLANGE NUT, 1/4"-20, ZINC PLATED	1
17	211547A	ELBOW 2", 90 DEG, PVC	1
18	212902	# 10 X 1/2" HEX WASHER HEAD METAL SCREW TYPE 25 ZINC	1
19	212006B	MOTOR HOUSING FOR HAZVAC 2000, PAINTED	1
20	211050B	BOLT, M5 X 16, HEX CAP, FULL THREAD, SS,	1
21	211352	SWITCH, 2POLE, 1THROW	1
22	211251A	FOAM SILENCER ADHESIVE 6"	1
23	211660	WARNING STICKER "USE INDOORS ONLY" REFLECTIVE MATERIAL	1
24	211791A	STRAIN RELIEF, FOR 120V, LIQUID TIGHT, GREY	1
25	211771	STICKER, GROUND LOCATION	1
26	211204	POWER CORD, 35', CANADA & USA	1
27	211027G	GASKET FOR HEPA/ULPA FILTER, 3/4" NEOPRENE SPONGE SC41, 5-1/4 OD X 3-3/8 ID	1
28	SUP070	SCREEN 304 STAINLESS .020" DIA WIRE 10 MESH X 10 MESH	1
29	211113	SPRING WASHER, M6 OR 1/4", SS	3
30	211247	WARNING STICKER, HIGH LEAKAGE CURRENT	1
31	211214	GASKET FOR INTERNAL HEPA HOUSING /FLOATER CAGE	1
32	211493	FLOATER CAGE FOR CS-XX (INTERNAL HEPA HOUSING FOR 4D-14/17/27)	1
33	211093	SPRING WASHER, M5, SS	3